

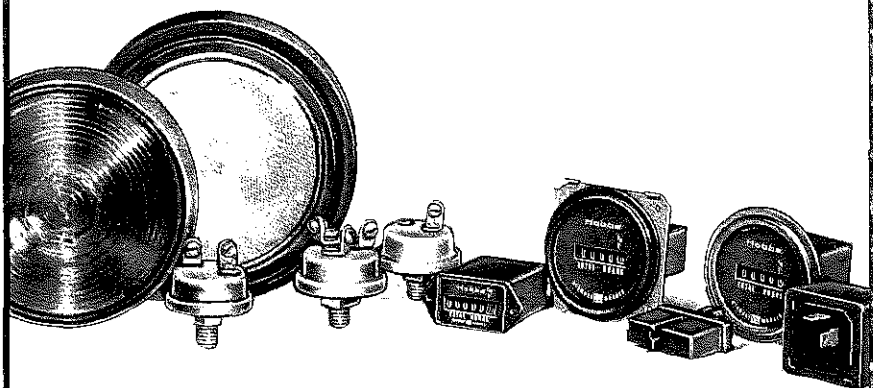
# SAE CHICAGO NEWS SECTION

VOL. 54 JANUARY, 1986 NO. 1



COMPUTERVISION

MANUFACTURING AUTOMATION CENTER



## **When machines talk, the language they use is Hobbs.**

Hour meters. Pressure and vacuum switches. Snap-action switches. Cold weather starting devices. Buzzers. Flashers. Halogen headlamps. Shock-resistant headlamps. Warning lights. Whatever machines need to call for help or perform more efficiently. Hobbs makes them better than anyone.

Hobbs is a prime supplier to the powered equipment industry. Anywhere something turns, spins or moves, Hobbs has a product to help it run better. Call or write today for our complete line of products. Hobbs Division, Stewart-Warner Corporation, Yale Blvd. and Ash St., Springfield, Illinois 62705. Call 217/753-7600.

Represented by: Ziegenbein Associates, Inc.  
200 Bishop's Way, Brookfield, WI 53005

*Hobbs, Communication between machine and man.*

SYMBOL OF

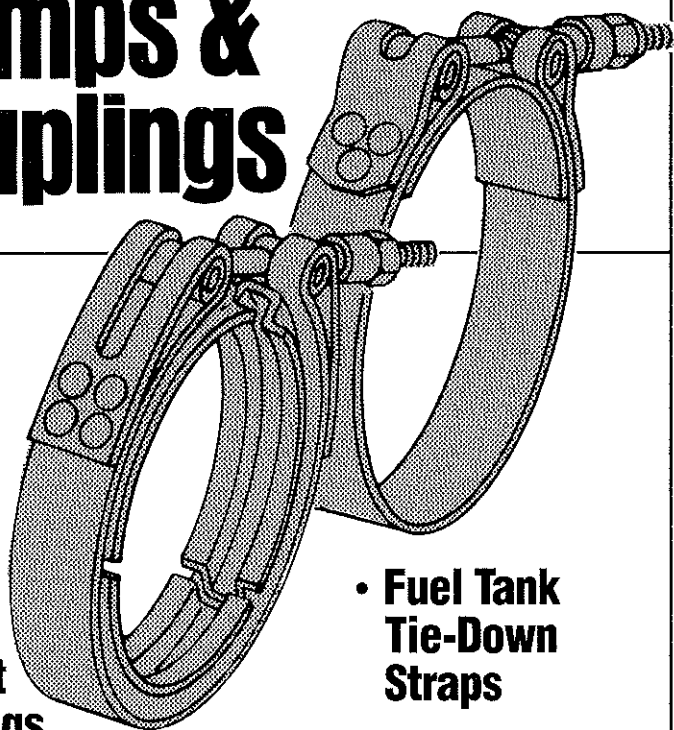


EXCELLENCE

***Hobbs*** Division  
**STEWART-WARNER**  
CORPORATION

*High-performance...Low-cost...*

# clamps & couplings



- **T-Bolt  
Hose  
Clamps**

- **V-Band  
Exhaust  
Couplings**

- **Fuel Tank  
Tie-Down  
Straps**

Voss offers standard and custom clamp configurations supplied to suit your specific needs. We prototype to expedite your production.

For Illinois    The SATEK Co.  
call...    (312) 885-4477

**Call Toll Free: 1-800-551-3863**



**INDUSTRIES, INC.**

2168 West 25 Street • Cleveland, OH 44113

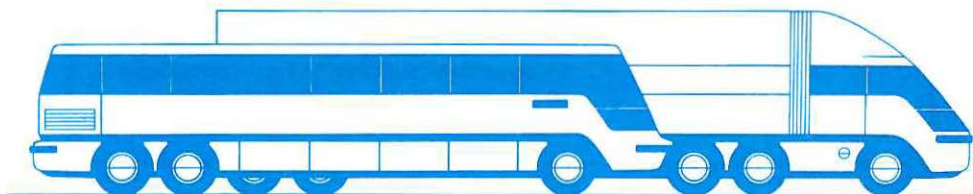
## **SAE ACTIVITIES**

**FOX VALLEY DIVISION — OCTOBER 15, 1985**



**DAVE CARLSON, Chairman Fox Valley Division, presents past-chairman's plaque to Bill Lindsey for his direction and efforts during the 1984-85 year.**

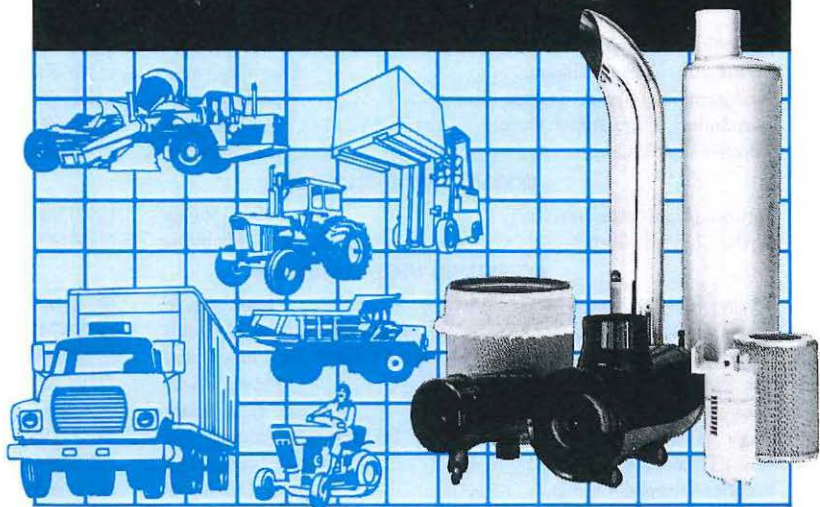
## **ON THE "HIGHWAY TO EXCELLENCE"**



**The Chicago Section deeply appreciated the privilege of serving as the Host Section for the 1985 Truck and Bus Meeting held December 9-12, 1985. The event will long be remembered. Trucks and Buses "Keep America Moving".**



# Maximize your design flexibility with Nelson technology



Are your design and cost reduction requirements being limited by standardized design and thinking? At Nelson, we've been custom-designing and manufacturing products to meet OE standards for nearly 50 years ... from specific components to complete exhaust and filtration systems. And Nelson's worldwide capabilities and technology meet your engineering and production demands, from America to Europe to Australia and beyond. Call or write and we'll be happy to consult with you on any of these areas:

- Exhaust systems - mufflers, formed tubes, spark arrestors, aspirators and rain caps.
- Air cleaner systems - single and two stage.
- Air filters - round, panel or almost any other style.
- Fuel filter coalescers.
- Reservoir systems - power steering, hydraulic and air.
- Lube and fuel filter systems.

**NELSON**

INDUSTRIES, INC.

## **NELSON DIVISION** *Exhaust & Filtration Systems*

Hwy. 51 West, P.O. Box 428  
Stoughton, WI 53589 U.S.A.  
Telephone (608) 873-4200  
Telex 26-5433

# **SAE CHICAGO NEWS** **SECTION**

Published by CHICAGO SECTION, SOCIETY OF AUTOMOTIVE ENGINEERS

**VOL. 54**

**JANUARY, 1986**

**NO. 1**

## **GOVERNING BOARD CHICAGO SECTION — 1985-1986**

### **EXECUTIVE COMMITTEE**

|  |               |                |
|--|---------------|----------------|
| C.F. Cervenka (Consultant)             | Chairman      | (312)-968-0459 |
| M.P. Thompson (Allis-Chalmers)         | Past Chairman | (312)-339-3300 |
| K.C. Wolfram (Caterpillar Tractor Co.) | Vice Chairman | (312)-859-5125 |
| M.R. Fernandez (Fram-Allied Corp.)     | Treasurer     | (312)-349-9483 |
| J.A. Damusis (Dana Corp.)              | Secretary     | (312)-960-4200 |

### **DIVISION VICE-CHAIRMEN**

|                                  |            |                |
|----------------------------------|------------|----------------|
| J.D. Carlson (Elgin Sweeper Co.) | Fox Valley | (312)-741-5370 |
| S.J. Borden (Allied Corp.)       | Michiana   | (219)-237-5635 |

### **ACTIVITIES VICE-CHAIRMEN**

|   |                              |                |
|---|------------------------------|----------------|
| A.W. Vering (CR Industries)                   | Membership                   | (312)-379-2500 |
| W.J. Farrell (CR Industries)                  | Manufacturing & Materials    | (312)-742-7840 |
| D.B. Lohbauer (Motorola, Inc.)                | Farm, Const., Ind. Machinery | (312)-590-5092 |
| J.A. Den Besten (International Harvester Co.) | Power Plants                 | (312)-836-3953 |
| R.J. Kozerski (Dana Corp.)                    | Parts & Accessories          | (312)-960-4200 |
| G.F. Raab (NTN Bearing Corp.)                 | Transportation Equipment     | (312)-298-7500 |
| R.L. Jenks (Motorola, Inc.)                   | Advanced Technology          | (312)-397-8000 |
| T.O. Wagner (Amoco Oil Co.)                   | Fuels & Lubricants           | (312)-420-5111 |
| G.A. Loebbaka (Caterpillar Tractor Co.)       | Student Activities           | (312)-859-4845 |

### **CHAIRMEN STANDING COMMITTEES**

|  |                       |                |
|--|-----------------------|----------------|
| R. Barkstrom (SAE)                     | Editor                | (312)-629-6363 |
| F. Egberts (Case)                      | Advertising           | (312)-887-2129 |
| R. Blank (Rolf Blank Public Relations) | Public Relations      | (312)-938-0002 |
| F. Blatz (Auto Research Labs, Inc.)    | Plant Representatives | (312)-563-0900 |
| H.R. Cernota (Consultant)              | Member Involvement    | (312)-863-4353 |
| O.F. Genz (Hydro-Components R & D)     | Engineering Resources | (312)-678-7670 |
| H. Yano (Caterpillar Tractor Co.)      | Arrangements          | (312)-859-5119 |
| C.W. Riebe (Arco Petroleum Products)   | Reception             | (312)-210-3557 |
| G. Rezek (International Harvester)     | Student Advisor       | (312)-865-3154 |
| A.E. Kluge (Caterpillar Tractor Co.)   | Photographer          | (312)-859-4786 |
| A.H. Bertram (Caterpillar Tractor Co.) | Long Range Planning   | (312)-859-5106 |
| D.G. Lytle                             | Long Range Planning   | (312)-537-2730 |
| C.E. Nelson (Consultant)               | Long Range Planning   | (312)-355-0372 |
| G.R. Bailey (Bailey Marketing, Inc.)   | Long Range Planning   | (815)-455-5064 |
| J.D. Carlson (Elgin Sweeper Co.)       | Long Range Planning   | (312)-741-5370 |
| R.T. Bennett (Case)                    | Long Range Planning   | (312)-887-2078 |
| G.R. Bailey (Bailey Marketing, Inc.)   | Historian             | (815)-455-5064 |

### **NATIONAL NOMINATING COMMITTEE**

|  |               |                |
|--|---------------|----------------|
| H.A. Weatherhead (H.A. Weatherhead Assoc.) | Delegate      | (312)-251-0529 |
| R.T. Bennett (Case)                        | 1st Alternate | (312)-887-2078 |
| C.F. Cervenka (Consultant)                 | 2nd Alternate | (312)-968-0459 |

Address all Correspondence to S.A.E. Chicago Section Office.  
330 E. Roosevelt Road, Lombard, IL 60148 • Phone: (312) 629-6363

**MICHIANA DIVISION**  
**SAE Chicago Section**  
**TUESDAY, JANUARY 21, 1986**

**Meeting Location**

**Steak and Ale**  
**52554 US 31 N**  
**South Bend, IN**

**SPEAKER**



**JOHN RONCZ**

**THE ARISTOTLE OF AIRFOILS**

**BY**

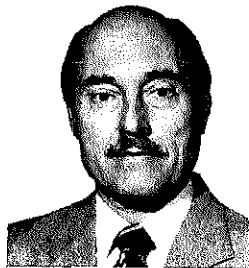
**JOHN RONCZ**

John will present a forum on the design of canard aircraft and his concept of optimized wing design — tailoring the airfoils to fit the total airplane.

**JOHN RONCZ** is a self employed designer of airfoils. John graduated from the University of Notre Dame with a degree in Arts and Letters and later started his own business for which he eventually acquired his own airplane. This along with some other occurrences led him to teach himself airfoil design. He has worked closely with Burt Rutan on such state-of-the-art stretching aircraft designs as the Beech Starship and the around-the-world Voyager.

**LEE HOLCOMB** is a Project Engineer at Allied-Bendix responsible for the North American Truck Power Steering Technical Center. He joined Bendix in 1955 and has been involved in many aerospace and automotive products. Lee has a BSME, Aeronautical, from the University of Toledo.

**CHAIRMAN**



**O.L. HOLCOMB**

**6:00 P.M. — Social Period**  
**6:30 P.M. — Dinner**  
**7:30 P.M. — Technical Presentation**

Student Support:  
Hydro-Components R & D Inc.

**Reservations:**

**Keith Fulmer**  
**Allied Automotive**  
**(219) 237-2115**

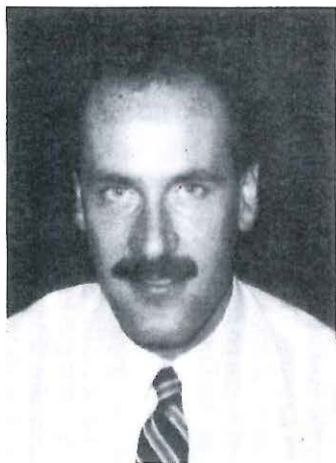
**Deadline: 4:00 P.M. EST**  
**Thursday, January 16, 1986**

**Prices**

**\$10.00**  
**\$10.50**

**Member**  
**Non-Member**

**SPEAKER**



**ALAN T. BILAND**

**CHAIRMAN**



**WILLIAM FARRELL**

**AUTOMATING THE PRODU**

**BY**

**ALAN T. BILAND**

Computervision, a world leader in Production, will demonstrate the application of Computerized Assembly. Also, featured will be Computerized Manufacturing Automation Center, one of the first to integration of CAD/CAM and manufacturing such as Machine Tools, Robots, and Numerical Control Machines. After the visit to Computerized Manufacturing Automation Center, a case study will be presented on the use of CAD/CAM technology in the Racing Car Development facility.

**ALAN T. BILAND**, Computervision Manufacturing Automation Center, joined the company in 1981 as a Numerical Control Specialist. He graduated from Kalamazoo College. He spent two years as a Designer in a prototype Mold Manufacturing facility. He has a degree in Computervision.

**WILLIAM FARRELL** is a sales manager at Rawhide Manufacturing Company. He has a MS Degree from Illinois State University.

**PLEASE POST THIS ANN**

**"GUESTS WELCOME - BRIN**



## SECTION

Y 14, 1986

## CT PROCESS

duct Process Automa-  
of Advance Mechanical  
outervision's Manufac-  
first facilities dedicated  
ufacturing equipment,  
d Coordinate Measur-  
outervision's Machine  
be presented discuss-  
t Roger Penske CART

on Project Manager,  
oined the company in  
ist. Mr. Biland attend-  
years as a Chief Tool  
acturer before joining

ngineer for Chicago  
E. Division. He holds  
iversity.

## OUNCEMENT A FRIEND"

Visit **COMPUTERVISION'S MACHINE AUTO-  
MATION CENTER** for demonstration. One  
Pierce Place, Itasca, IL. Off Park Blvd. (be-  
hind Hamilton Hotel) between Devon and  
Thorndale at Route 53.

5:00 - 5:45 P.M. — Session (1)

5:45 - 6:30 P.M. — Session (2)

### ELMHURST COUNTRY CLUB

WOOD DALE ROAD

BETWEEN LAKE STREET (ROUTE #20)

AND

IRVING PARK ROAD (ROUTE #19)

7:00 P.M. Social Half-Hour

"ATTITUDE ADJUSTMENT HOUR"

7:30 P.M. Dinner

8:30 P.M. Technical Session

### MEETING SPONSORS

### ASEA ROBOTICS DIVISION

### COMPUTERVISION

### CR INDUSTRIES

### MOTOROLA INC.

### TICKET PRICES

|                       |              |
|-----------------------|--------------|
| Members & Spouses     | \$11.00 each |
| Non-members & Spouses | \$13.00 each |
| Students              | \$ 6.00 each |

### Dinner Reservations Required

Single Table Reservations Restricted to 8 people.

Contact your plant representative.

or Chicago Section Office  
(312) 629-6363

**PRIZE DONORS**  
**42ND ANNUAL PLAY DAY**  
**September 5, 1985**  
**St. Andrews and Bartlett Hills Country**  
**Clubs**

The Entertainment Committee and everyone in the SAE-Chicago Section is indebted to those companies listed below who gave valuable prizes to make the day the success that it was. Thank you!!!

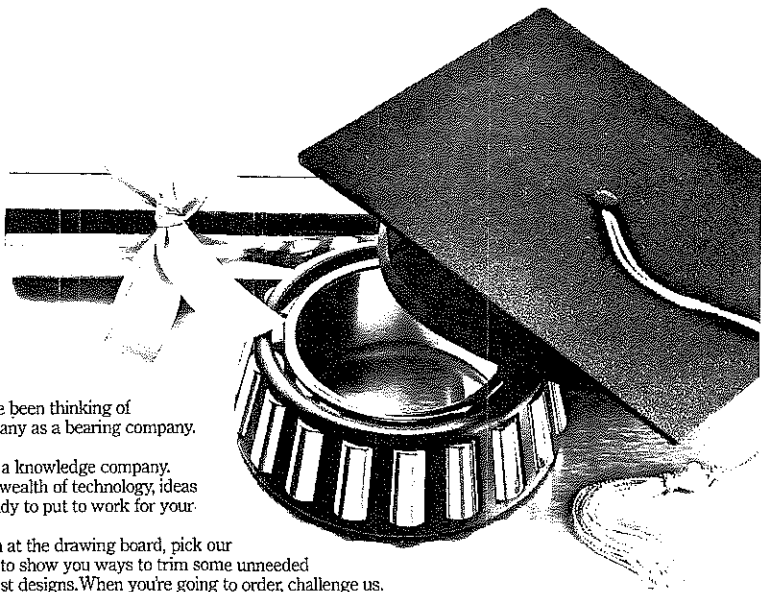
Aetna Bearing Co.  
Air Maze  
Airtex Products  
Burton Spring  
Champion Spark Plug  
Cherry Electric Products Corp.  
Chicago Rawhide — CR Industries  
Clarkson Co.  
Dana Corp.—Victor Products Div.  
Dana Corp.—Engine Products Div.  
Fel-Pro, Inc.  
Fram Corp.  
Garrett Corp.—Air Research Division  
Heck Direct Mail and Printing Service  
Hendrickson Mfg. Co.—Tandem Div.

Hydro-Components R & D, Inc.  
Jessen Mfg. Co., Inc.  
Koppers Co., Inc.  
Omni-Pac, Inc.  
Richards Industries  
Robertshaw Controls Co.  
Sheller Globe Corp. —  
    Leece-Neville Division  
The Timken Co.  
United Air Cleaner Co.  
Vickers  
H.A. Weatherhead Associates  
Wisconsin Gasket Mfg. Co.  
Zollner Corp.

A First Grand Prize drawing was for a color TV set.  
A Second Grand Prize was donated by The Timken Co. and was for six (6) Golden Box Seat Tickets to the September 10, 1985 Chicago White Sox baseball game at Comiskey Park, plus a Goldent Box Parking Pass for the game.

If inadvertently your name has been omitted please contact the Chicago Section Office.

# IT'S NOT JUST WHAT WE MAKE. IT'S WHAT WE KNOW.



**F**OR YEARS, you've been thinking of  
The Timken Company as a bearing company.  
Or a steel company.

Now think of us as a knowledge company.

A company with a wealth of technology, ideas  
and skills that we're ready to put to work for your  
company right now.

When you sit down at the drawing board, pick our  
brains. We may be able to show you ways to trim some unneeded  
weight from your newest designs. When you're going to order, challenge us.  
We'll share ideas for streamlining the way you buy from us.

When you're setting up production, call us in. We'll show your people a few  
special tricks we've learned that may save you time and money.

The Timken Company. The knowledge company. Put us to the test. We think  
we'll pass with flying colors.

The Timken Company, Canton, Ohio 44706.

**TIMKEN®**  
REGISTERED TRADEMARK

# WHO'S JOB IS IT?

This is a story about four people named Everybody, Somebody, Anybody and Nobody. There was an important job to be done and Everybody was sure Somebody would do it. Anybody could have done it, but Nobody did it. Somebody got angry about that, because it was Everybody's job. Everybody thought Anybody could do it but Nobody realized that Everybody wouldn't do it. It ended up that Everybody blamed Somebody when Nobody did what Anybody could have done.

## SAE-CHICAGO SECTION

### 1985-1986 Meeting Dates

| Date          | Group      | Subject                             |
|---------------|------------|-------------------------------------|
| 1985          |            |                                     |
| 10-8          | Chicago    | Caterpillar Wheel Loader            |
| 10-15         | Fox Valley | Caterpillar Integrated Tool Carrier |
| 10-15         | Michiana   | New Energy Ethanol Plant            |
| <hr/>         |            |                                     |
| 11-12         | Chicago    | Power Plants                        |
| 11-19         | Fox Valley | Epcot Center                        |
| <hr/>         |            |                                     |
| 12-9 to 12-12 | Chicago    | SAE - National Truck & Bus Meeting  |
| <hr/>         |            |                                     |
| 1986          |            |                                     |
| 1-14          | Chicago    | Manufacturing & Materials           |
| 1-21          | Michiana   | Aristotle Of Airfoils               |
| <hr/>         |            |                                     |
| 2-11          | Chicago    | Parts & Accessories                 |
| 2-18          | Fox Valley | Harley-Davidson V-2 Engine          |
| <hr/>         |            |                                     |
| 3-11          | Chicago    | Transportation Equipment            |
| 3-18          | Fox Valley | Lubricants (Gear Oils)              |
| 3-18          | Michiana   | U.S. Military Vehicle - Hummer      |
| <hr/>         |            |                                     |
| 4-15          | Chicago    | Fuels and Lubricants                |
| 4-22          | Fox Valley | Engine Vibration Dampening          |
| 4-22          | Michiana   | East Race                           |
| <hr/>         |            |                                     |
| 5-13          | Chicago    | Advanced Technology                 |



## **SAE ACTIVITIES**

**PLAY DAY**

**SEPTEMBER 5, 1985**



**As is self-evident, Play Day always involves a great deal of physical exertion — — — — —**

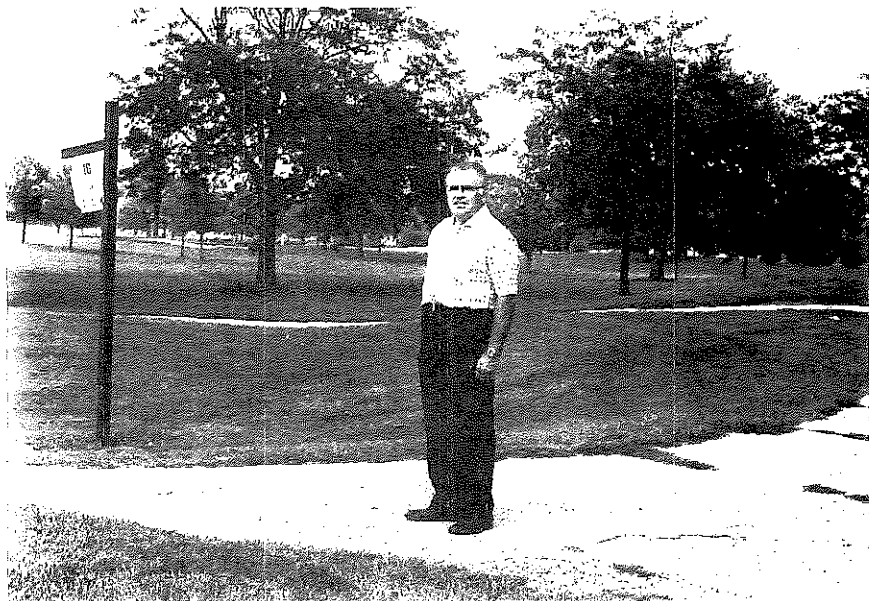


**— — — — and hard work.**

## **SAE ACTIVITIES**

**PLAY DAY**

**SEPTEMBER 5, 1985**



**There are some who stand and serve.**



**There are some who serve and wait.**

RETURN POSTAGE GUARANTEED



CHICAGO SECTION

330 E. ROOSEVELT ROAD  
LOMBARD, ILLINOIS 60148

Non-Profit  
Organization  
U.S. POSTAGE  
**PAID**  
LOMBARD, ILL.  
Permit No. 296

**SAE** *The Engineering  
Resource For  
Advancing Mobility*

**HAVE YOU TALKED  
TO ANYONE  
LATELY  
ABOUT JOINING  
SAE?**